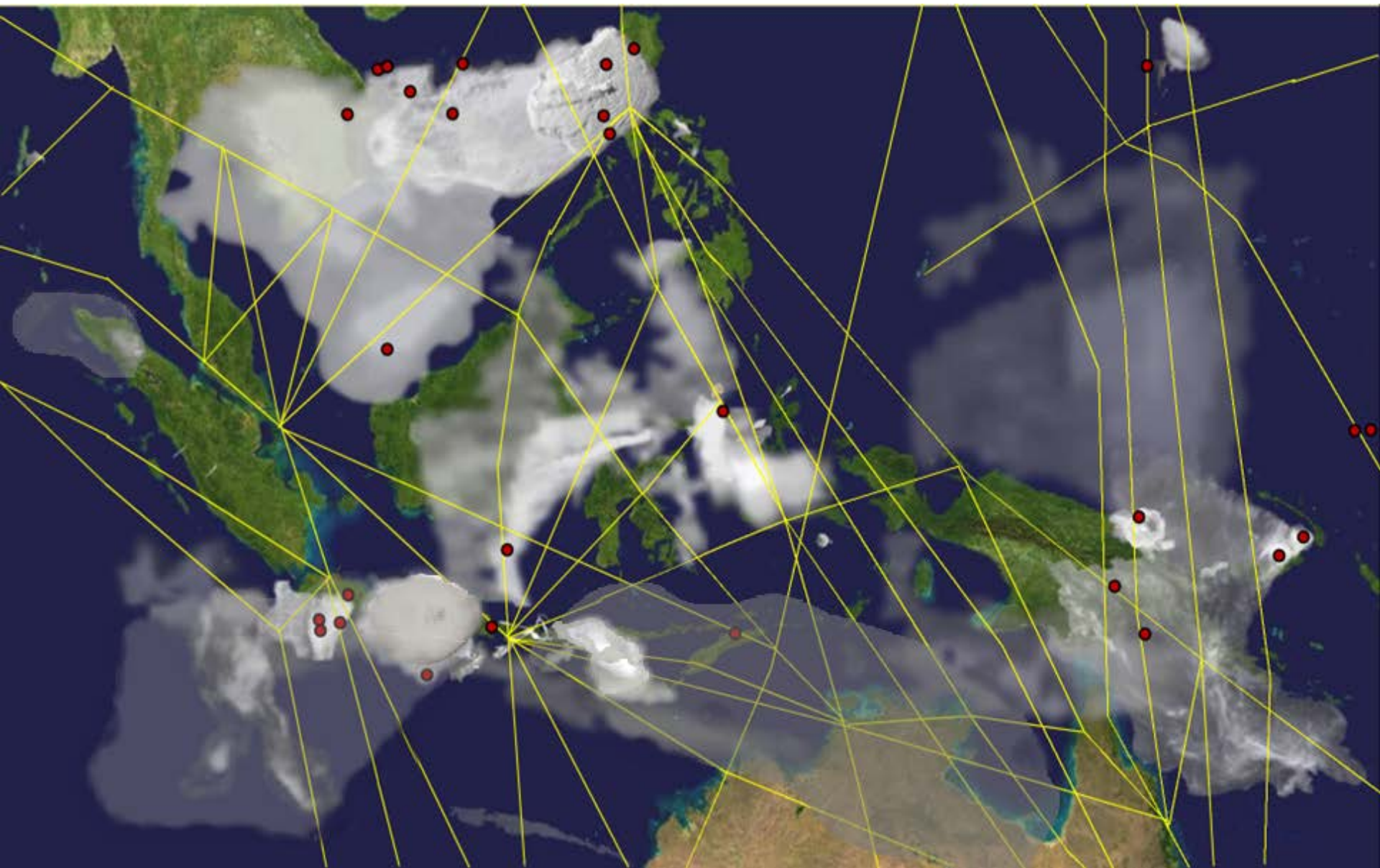




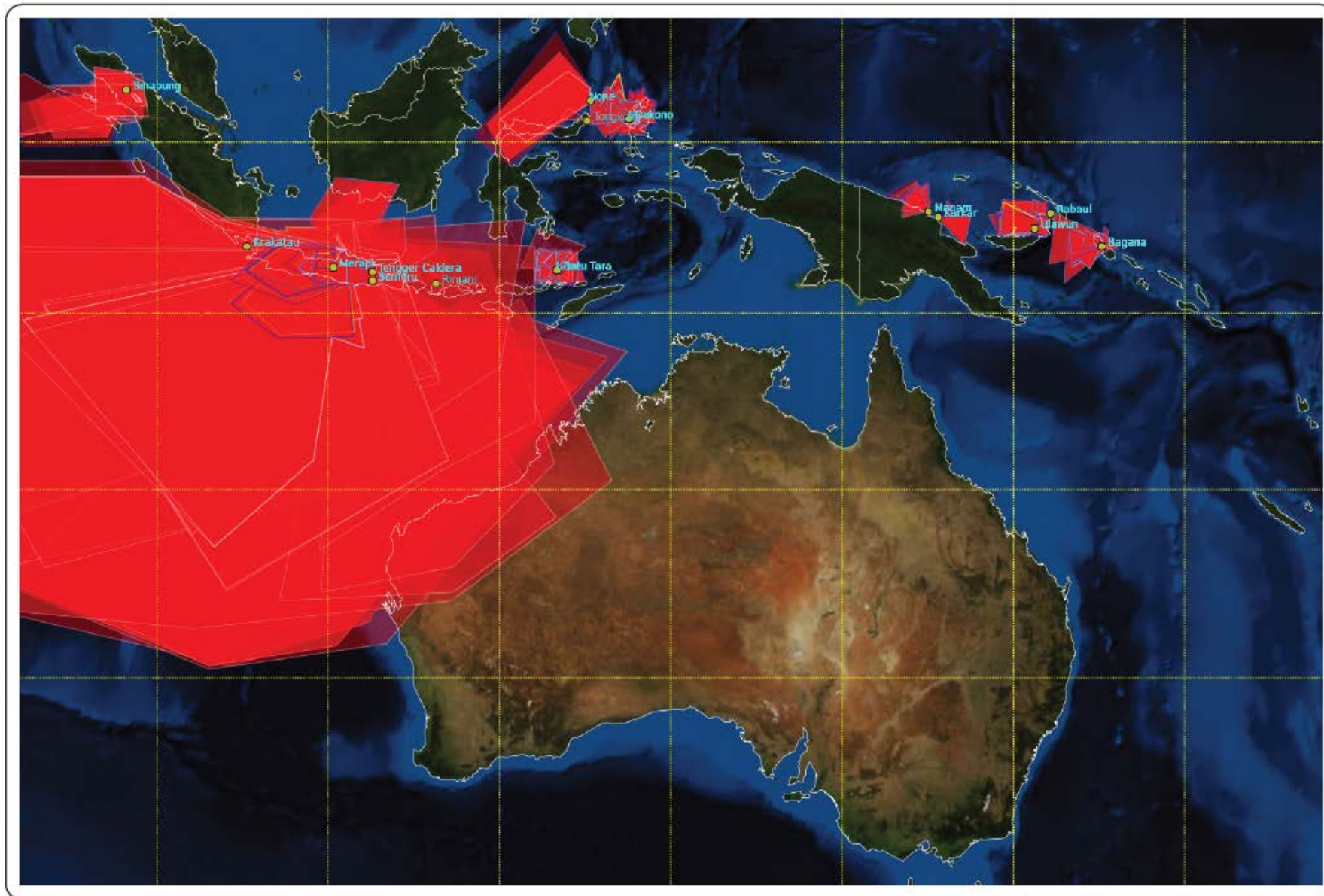
1982 – 2015 ash encounters SE Asia



VAAC Operations: 2010



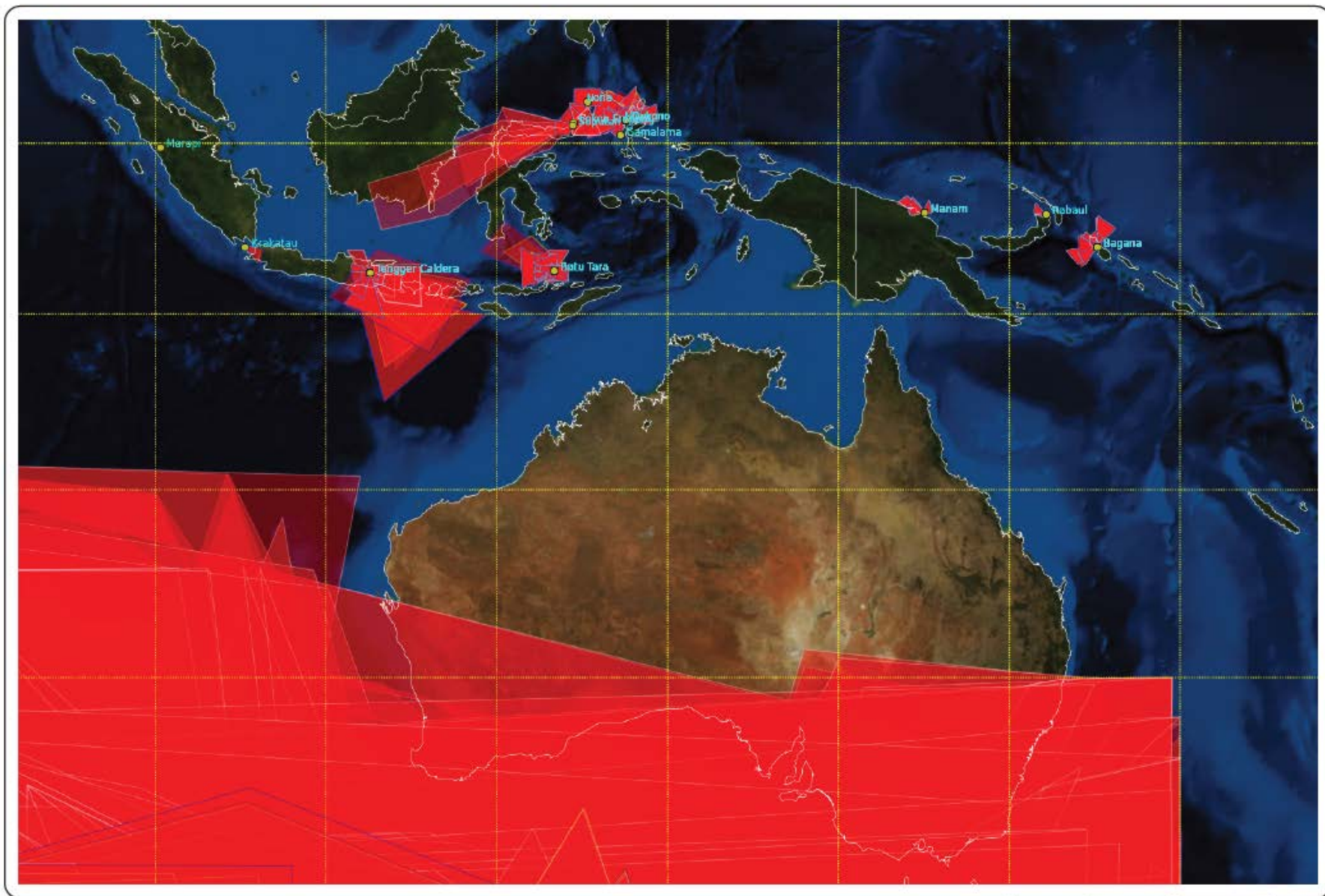
Australian Government
Bureau of Meteorology



VAAC Operations: 2011



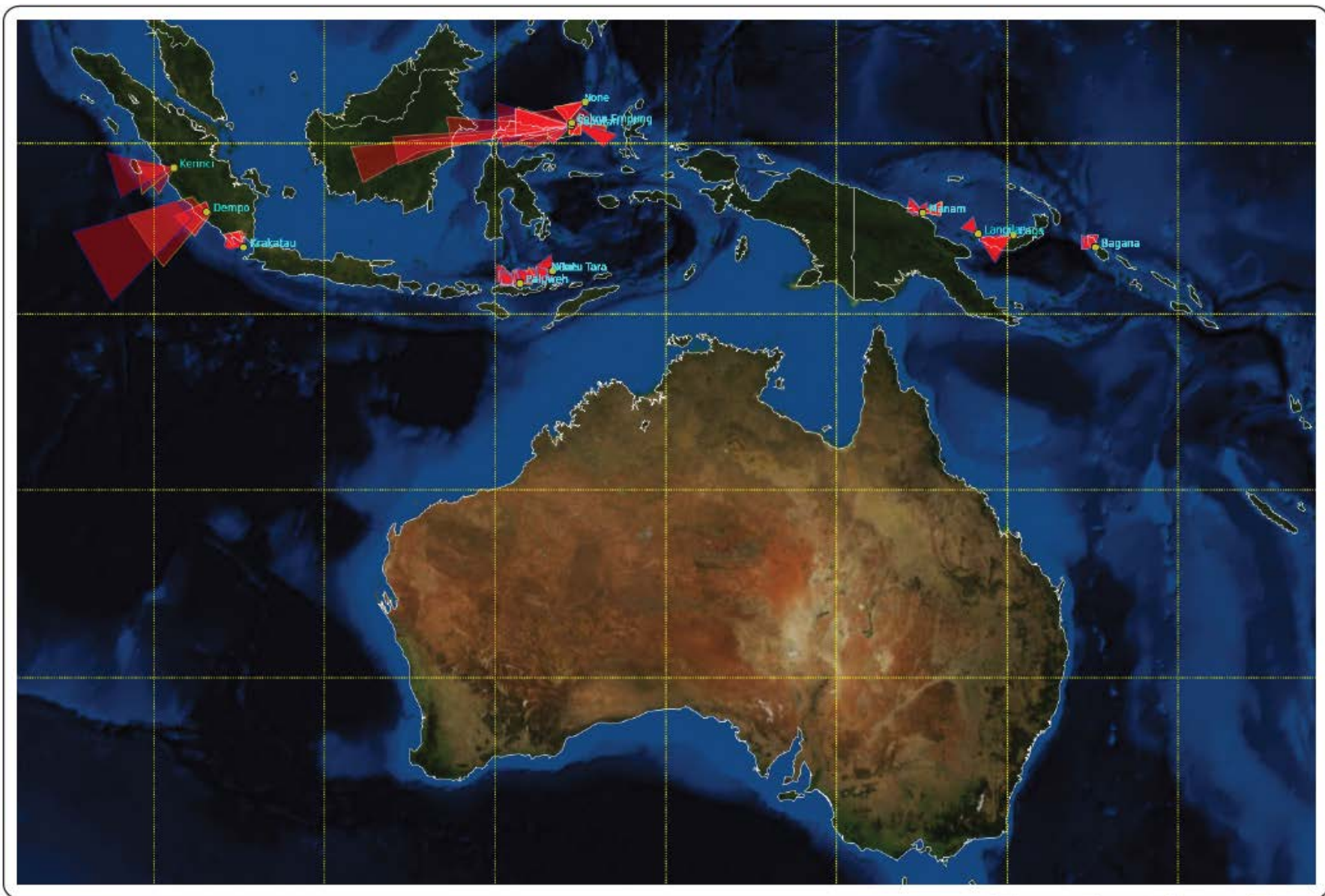
Australian Government
Bureau of Meteorology



VAAC Operations: 2012



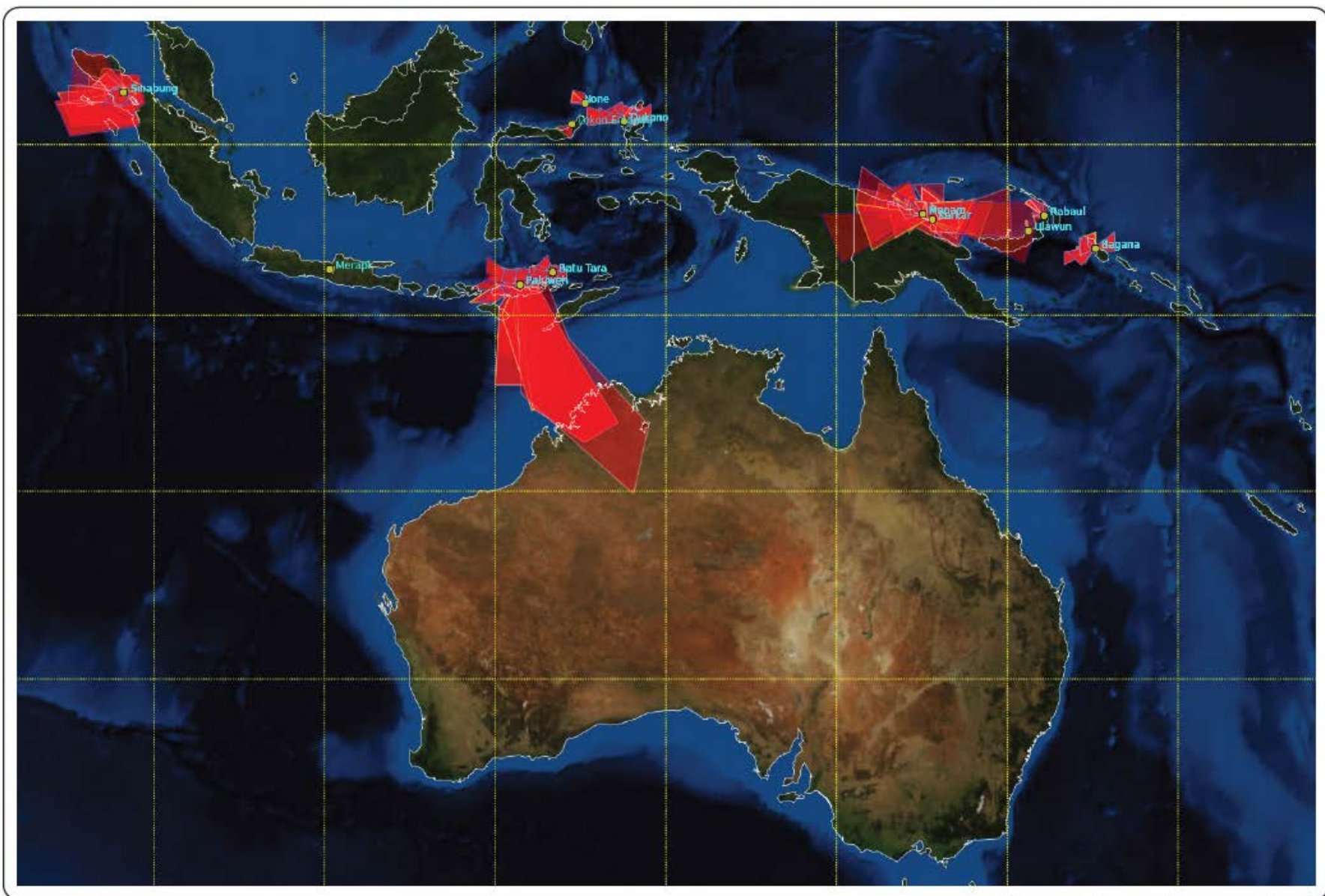
Australian Government
Bureau of Meteorology



VAAC Operations: 2013

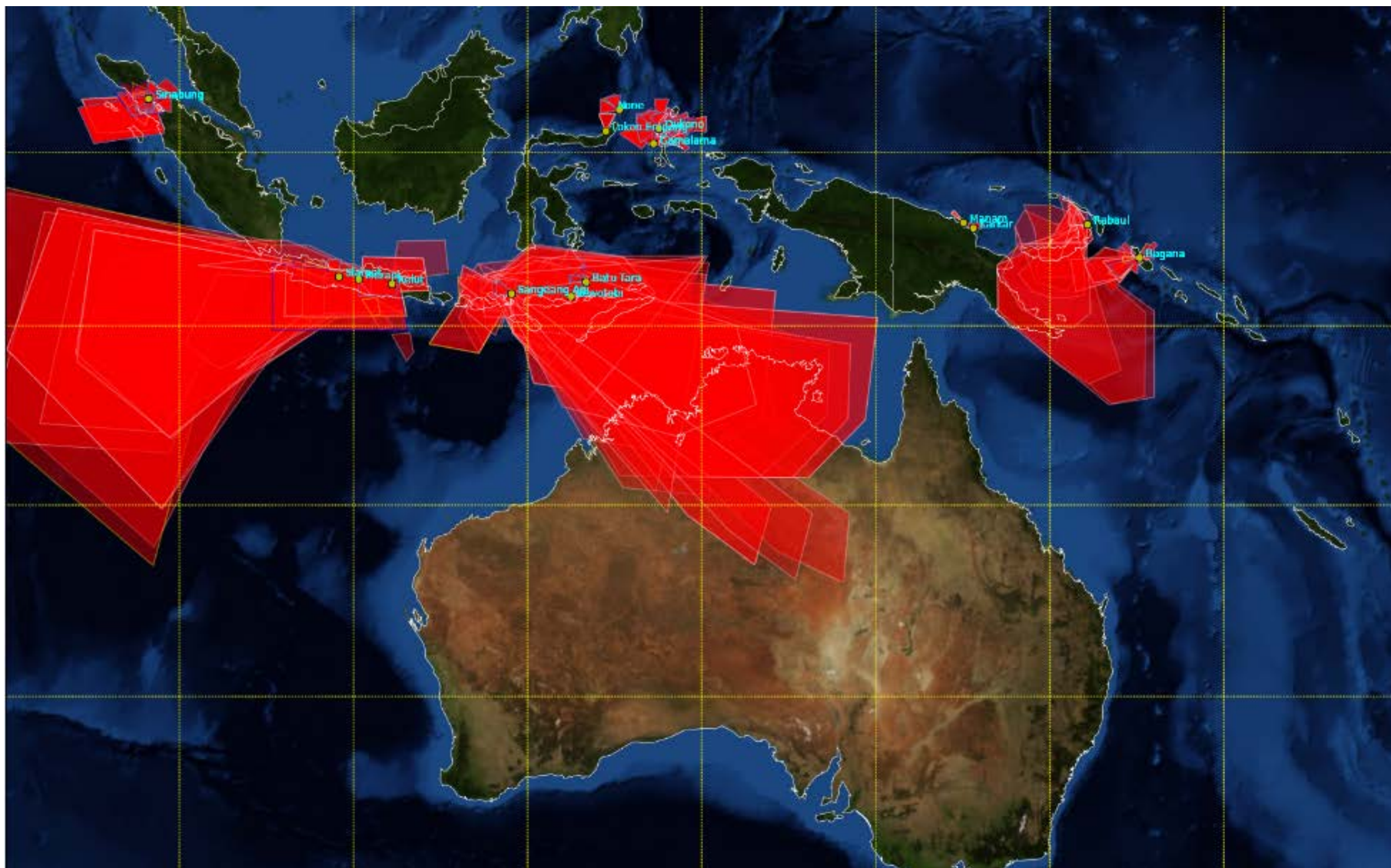


Australian Government
Bureau of Meteorology





VAAC Operations: 2015



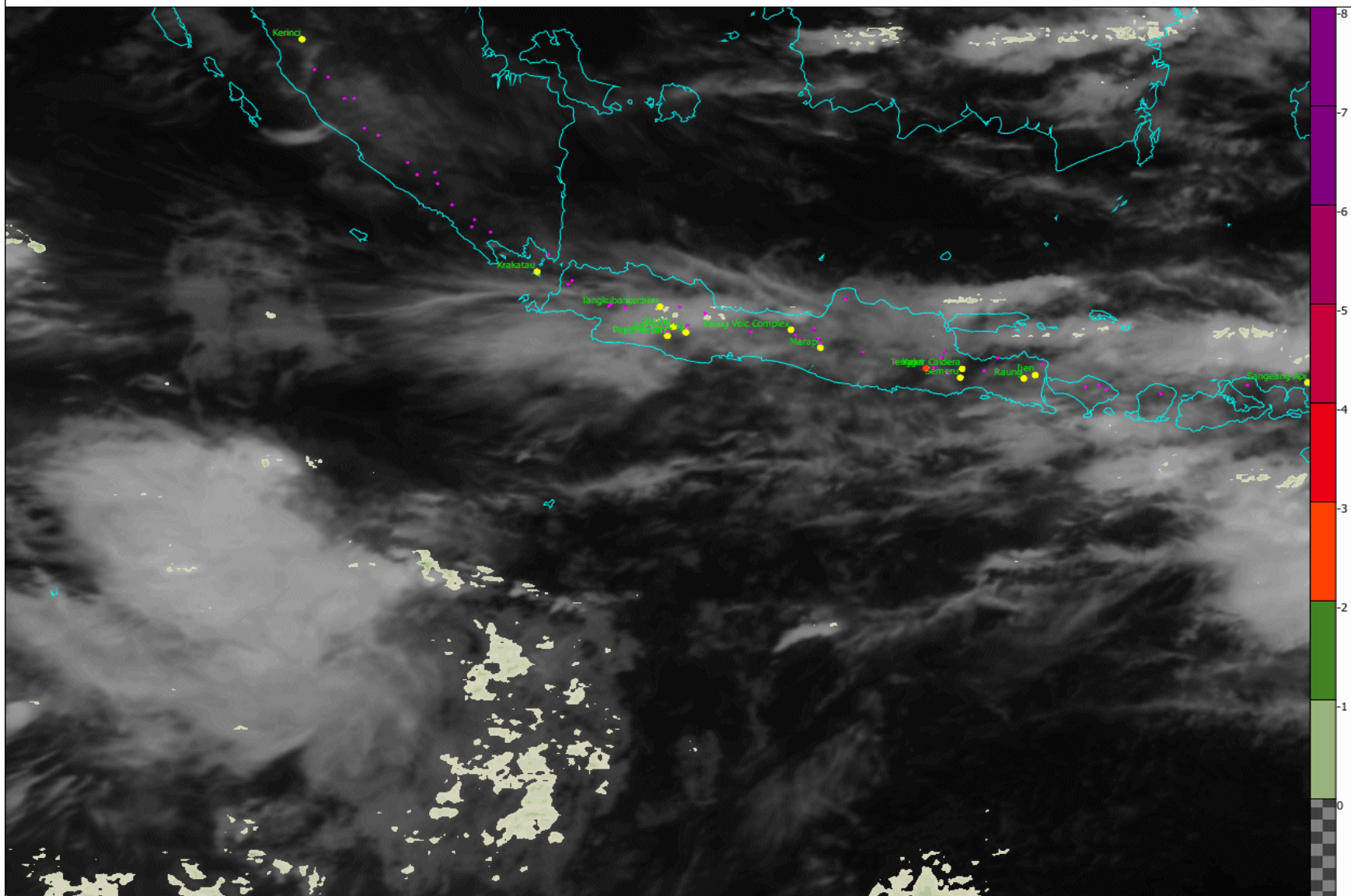
Gunung Kelud: February 2014



Australian Government
Bureau of Meteorology

Volcanic Ash Monitoring - MTSAT-2 Split Window Image

Valid at Thu 13 Feb 2014 15:32 UTC

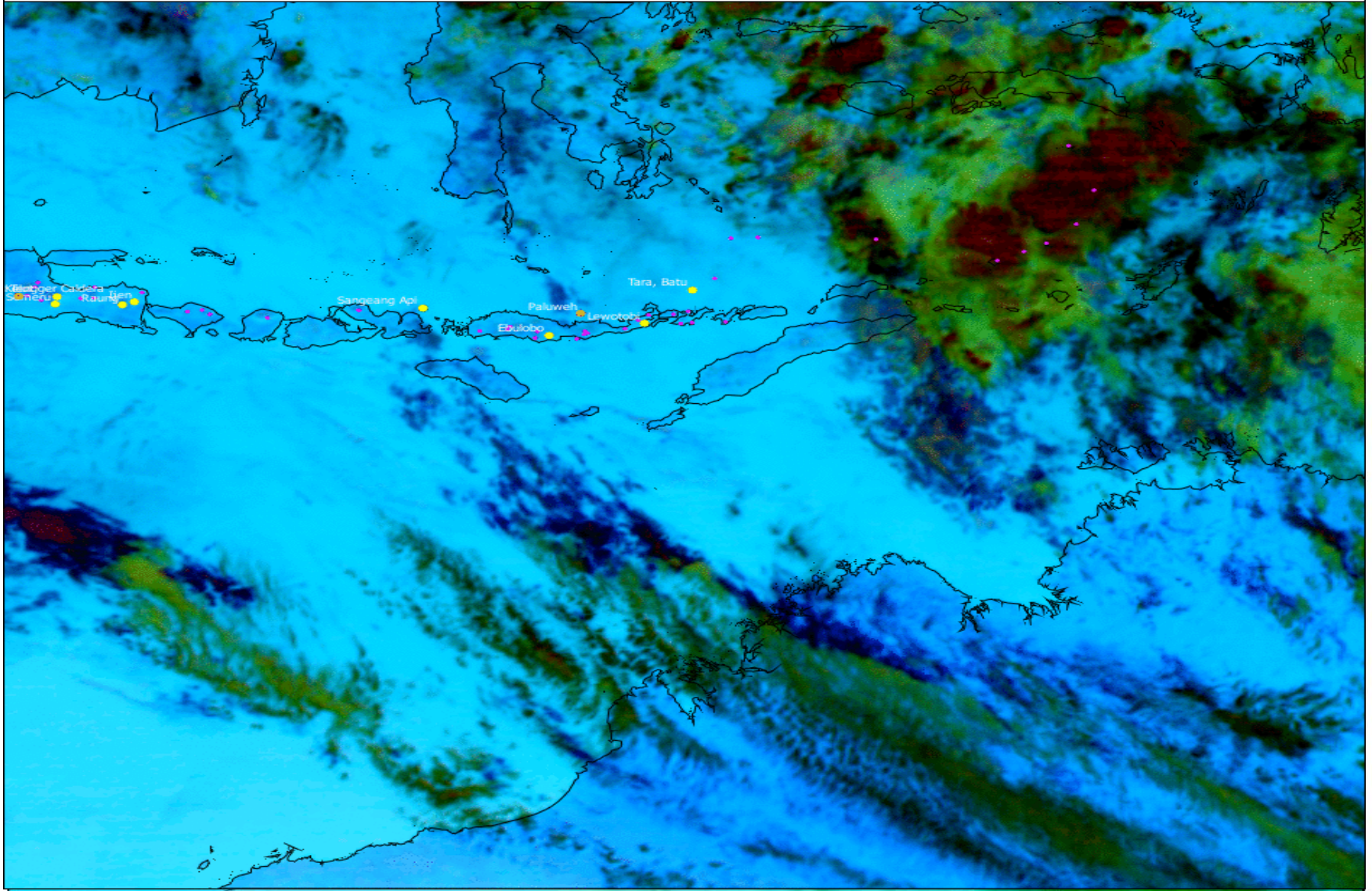


Sangeang Api: May 2014



MTSAT-2 VAAC Detection RGB

Valid Fri, 30 May 2014 04:32 UTC





Volcanic Ash Advisory Centre best practice is...

The expert evaluation of the best available sources of meteorological and volcanological information:

- qualitative and quantitative satellite data
- model output
- ground and airborne based in-situ and remotely sensed observations
- pilot reports

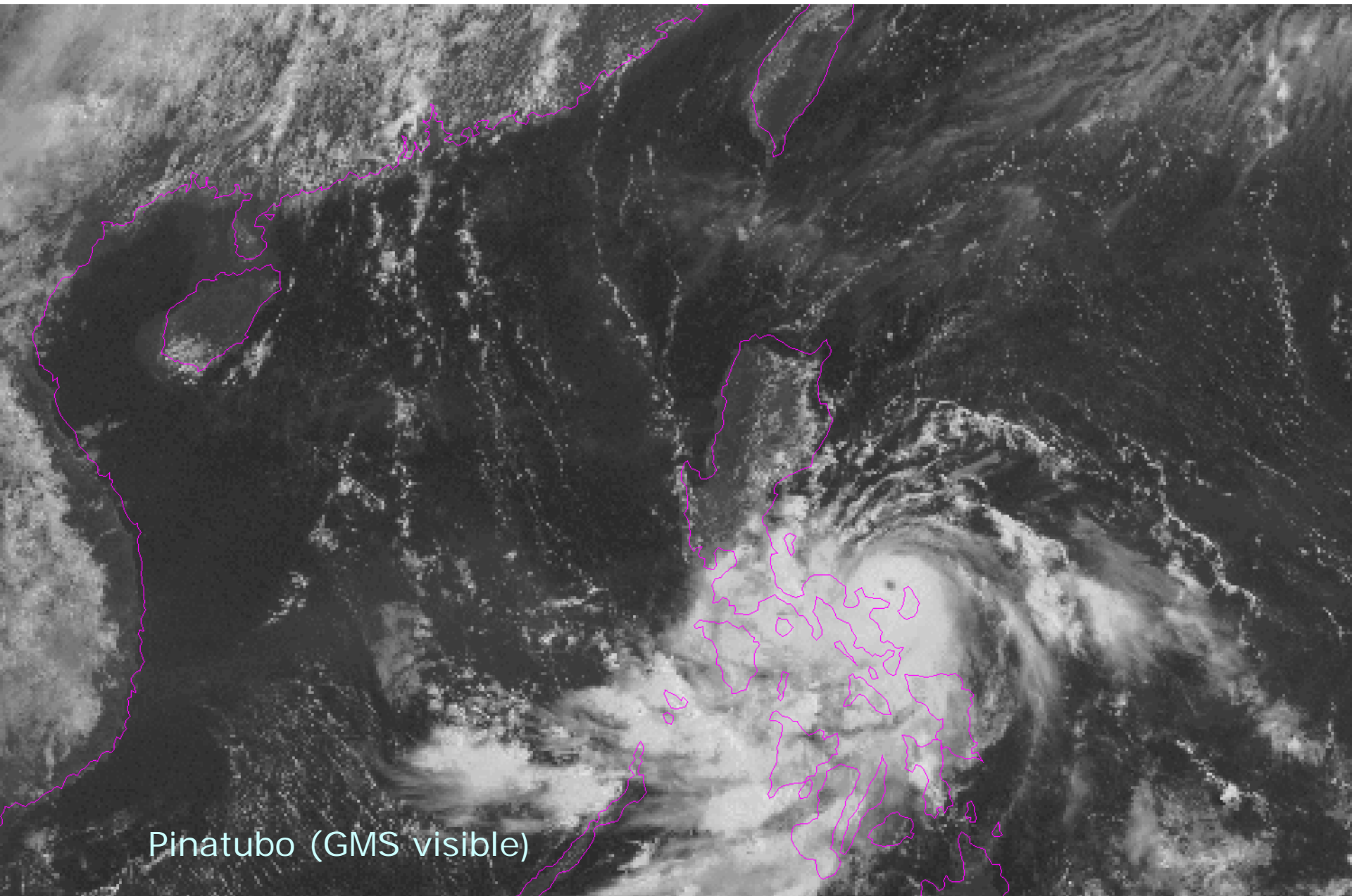
using (where possible) collaborative approaches, to derive authoritative, high quality, evidence based and globally consistent analysis and forecasts.

Ready for the next big eruption....



Australian Government

Bureau of Meteorology



Pinatubo (GMS visible)